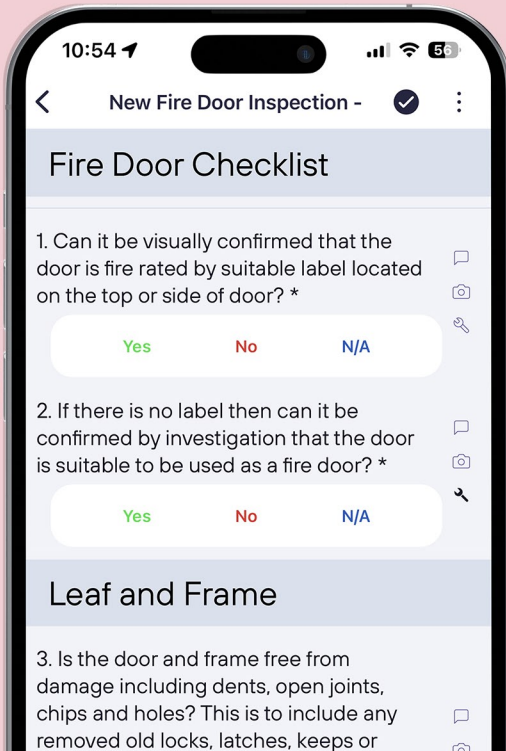


# Fire Safety



Our fire safety module packages the Mobiess audits and inspections platform with preconfigured, ready to use templates to streamline how organisations manage and complete Fire Risk Assessments, Fire Door Inspections and Fire Compartmentation Surveys.



## Fire safety done right

Complete accurate and thorough inspections to keep your buildings compliant and its occupants safe at all times.

Mobiess offers a paper-free way for you and your team to manage your auditing and reports with efficiency and accuracy.

Immediately identify and assess potential risks with full photographic evidence, create action plans to reduce the risk of fire-related danger in a building. Generate additional notes and view our high quality reports on our web-portal.

To get you started, we offer a set of preconfigured inspection templates that you can use immediately with your team.



### Fire Risk Assessments

Manage your risk assessments, capture consistent data, streamline how you log actions and capture evidence.



### Fire Door Inspections

Inspect your fire doors, log actions, photos, notes and build quality and accurate fire door asset registers.



### Fire Stopping Surveys

Streamline your fire compartmentation surveys, which play a vital role in limiting the spread of fires.

Trusted by organisations of all sizes



# Benefits



## Go Paperless

Streamline your inspection process, save time, organise your data, and eliminate paperwork, all whilst reducing costs.



## Capture Photos

Audits can be stored with photographic evidence and annotations on photos to highlight any issues you capture during inspections.



## Reporting

Visit our web-based portal to view performance and trends in your real-time dashboards and high quality reports.



## Manage Actions

Refine your action logging and reduce human error by utilising configurable prepopulated action picklist options. Manage locally on devices or on the portal.



## Works Offline

Mobiess utilises offline data collection & secure storage if no network connection is available. **No connection? No problem!**



## Data Quality

Transform how your teams capture data on site. **Improve productivity, data quality, accuracy and consistency.**

A smartphone screen displaying the 'Create Corrective Action' form. The form has two tabs: 'DETAILS' (selected) and 'PICTURES'. It contains several fields with dropdown menus: 'Category' (Remedial), 'Description' (Lack of documentation – No supporting documentation available to verify fire door specification (e.g., test certification)), 'Date Reported' (23 Dec 2025), 'Date Due' (06 Feb 2026), 'Impact' (Major), and 'Probability' (High). At the bottom, there is a 'Location' field with the text 'Tudor House, First Floor, Boardroom, FD000089'. The status bar at the top shows the time 10:53, signal strength, Wi-Fi, and battery level at 59%.

## Never under-report again

Ensure your teams are reporting properly and addressing remedial actions, hazards and potential risks – collect the data your organisation actually needs.

Our fire safety module has various ways you can export and view your data on the web-portal, straight out of the box. Capture the right data, generate the right reports.

- Fire Risk Assessment report (per site)
- Fire Compartmentation report (per site)
- Individual detailed fire door inspection report (per asset)
- Multi-door building-based report (per site)
- Corrective action summary reports (per project or per site)
- Corrective action raw data export (excel/csv)
- Export of all door asset attribute, location and condition data



## Fire Door Inspections

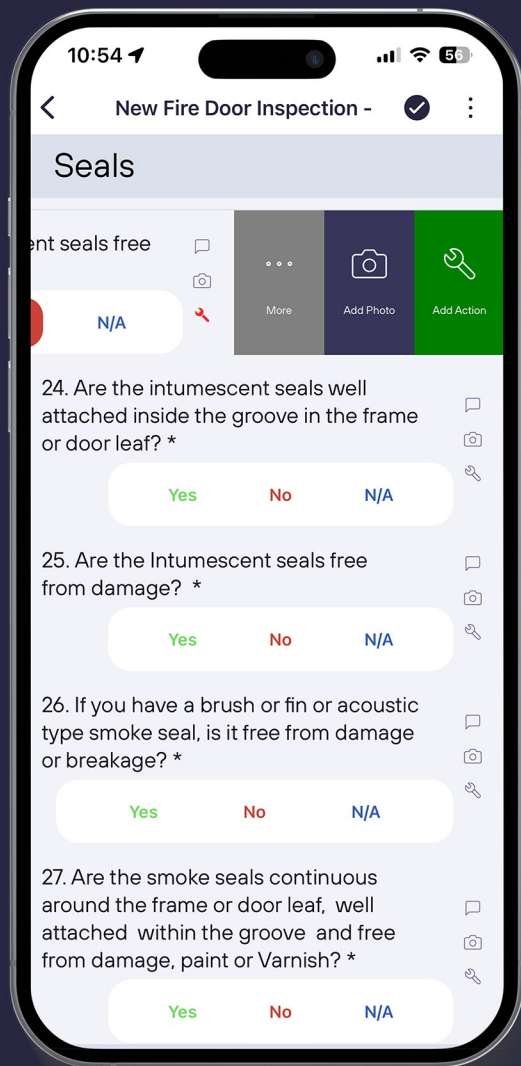
Create and maintain an accurate fire door register and inspect fire doors comprehensively to make sure standards and safety are maintained.

Our standard template drives checks for:

- Correct fire rating for the location
- Door, frame, and securing wall.  
Correct fitting of closures, hinges and other ironmongery.
- Compliance of door gaps
- Compliance of strips and intumescent seals.
- Correct glazing is used and fitted appropriately.
- Any damage on the fire door.

Mobiess supports various standards (BM Trada etc) and offers a comprehensive set of 35+ preconfigured checklist questions as default - giving customers a foundation to work from, or get started inspecting fire doors immediately.

Need customisation? No problem



10:54

New Fire Door Inspection -

### Seals

ent seals free

N/A

More Add Photo Add Action

24. Are the intumescent seals well attached inside the groove in the frame or door leaf? \*

Yes No N/A

25. Are the Intumescent seals free from damage? \*

Yes No N/A

26. If you have a brush or fin or acoustic type smoke seal, is it free from damage or breakage? \*

Yes No N/A

27. Are the smoke seals continuous around the frame or door leaf, well attached within the groove and free from damage, paint or Varnish? \*

Yes No N/A

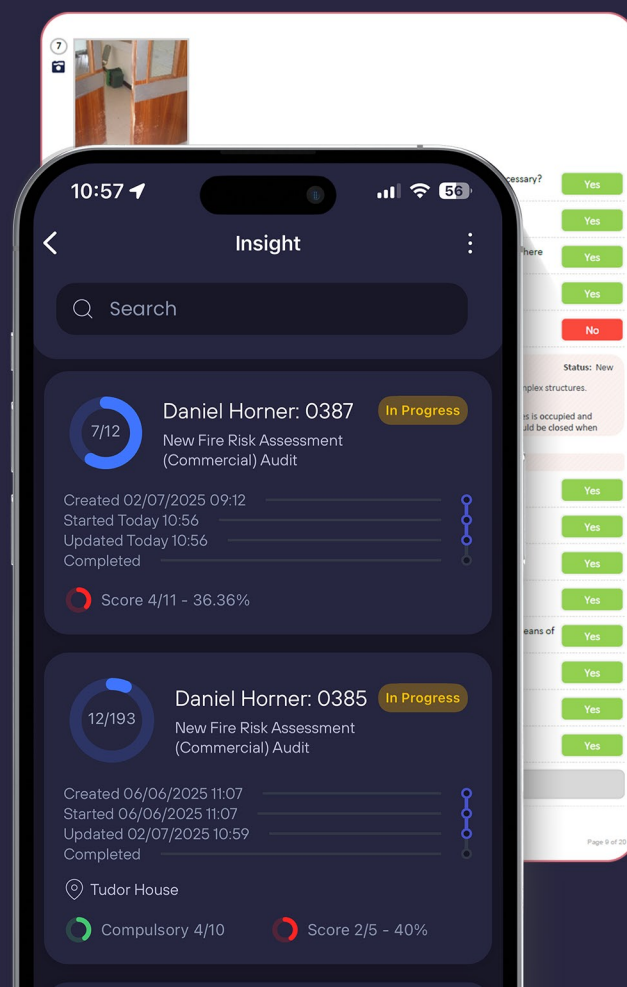
## Fire Risk Assessments

Our easy to use mobile platform allows you to streamline how you conduct Fire Risk Assessments on both iOS and Android devices.

Answer questions with the tap of a finger and preselect (configurable) picklist answers for text-based questions and actions. Add photographs, additional notes and remedial actions against any question and capture data with consistency, improving the quality of your reports.

View your automatically generated reports on our desktop web-portal, displaying all questions, answers, photographs and actions in a high quality, stylised PDF format.

Demonstrate fire safety compliance at an affordable cost, whilst eliminating the need for manual paperwork, saving time and organising your data.



10:57

Insight

Search

7/12 Daniel Horner: 0387 In Progress  
New Fire Risk Assessment (Commercial) Audit

Created 02/07/2025 09:12  
Started Today 10:56  
Updated Today 10:56  
Completed

Score 4/11 - 36.36%

12/193 Daniel Horner: 0385 In Progress  
New Fire Risk Assessment (Commercial) Audit

Created 06/06/2025 11:07  
Started 06/06/2025 11:07  
Updated 02/07/2025 10:59  
Completed

Tudor House

Compulsory 4/10 Score 2/5 - 40%